

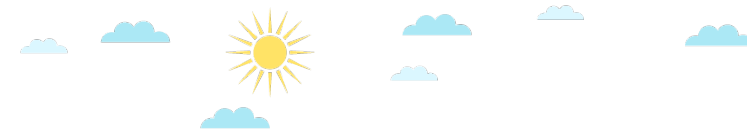


Project E3: Educate, Empower, and Employ

Vocational Rehabilitation Technical Assistance Center: Targeted Communities (VR-TAC-TC)

projecte3.com





Providing Employment Supports to Individuals with Serious Mental Illness

Randy Loss, M.A., C.R.C.
Kimberly Gerlach, M.S, C.R.C.

August 27, 2020



Objectives

Participants will:

- Gain knowledge of about needs of individuals with Mental Health
- Understand how to best provide employment supports for individuals with Mental Health
- Learn how to assist those with Mental Health in setting goals and developing long term supports
- Learn about programs and resources for people coping with Mental Health

Definitions

- SUD
- SMI
- SED
- Comorbid
- Dual-diagnosed

Transition Age Youth

- Youth Technical Assistance Center
- Think College
- Youth Leadership Network





Supports to Youth

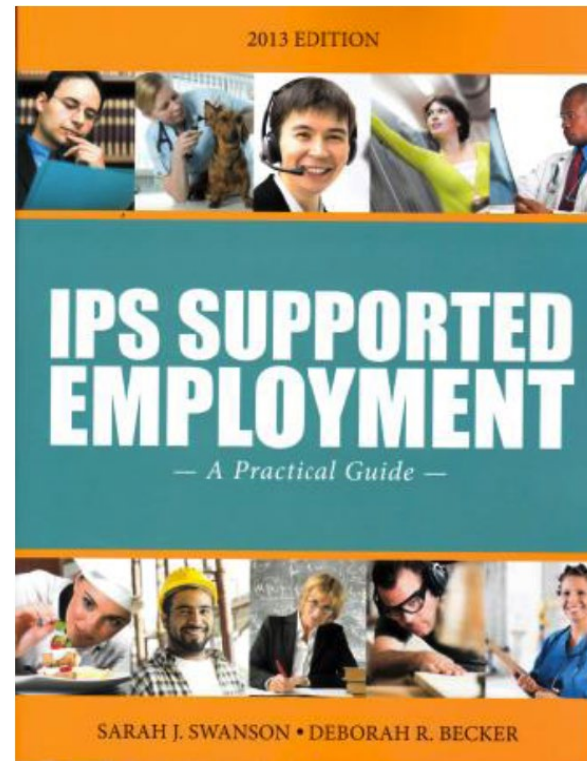
- First Episode Psychosis
- Family Peer
- Schools
- Colleges





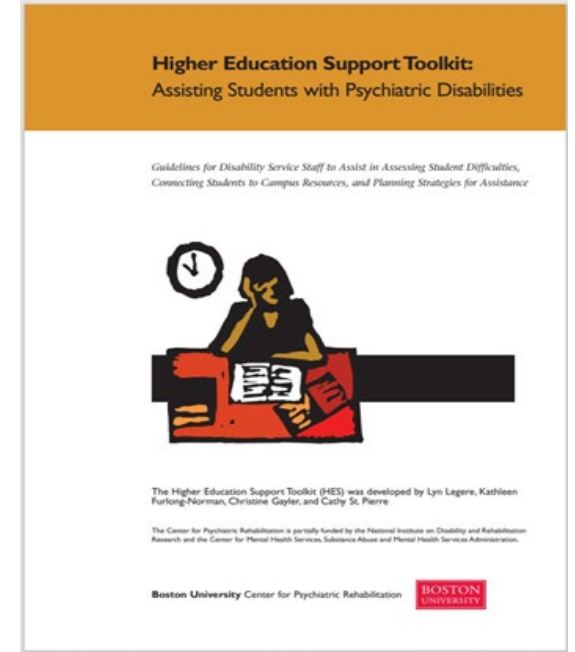
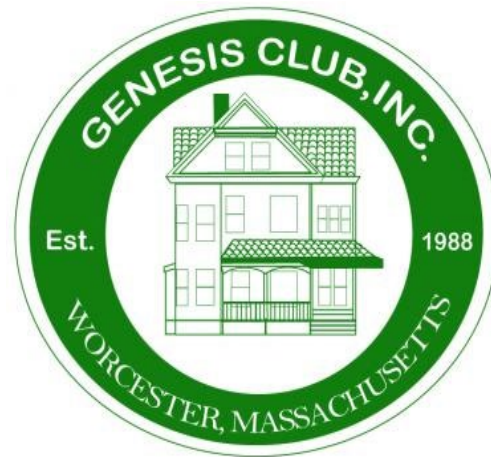
Supported Employment

- Individual Placement and Support
- Collaboration with Mental Health Agency
 - State
 - Local



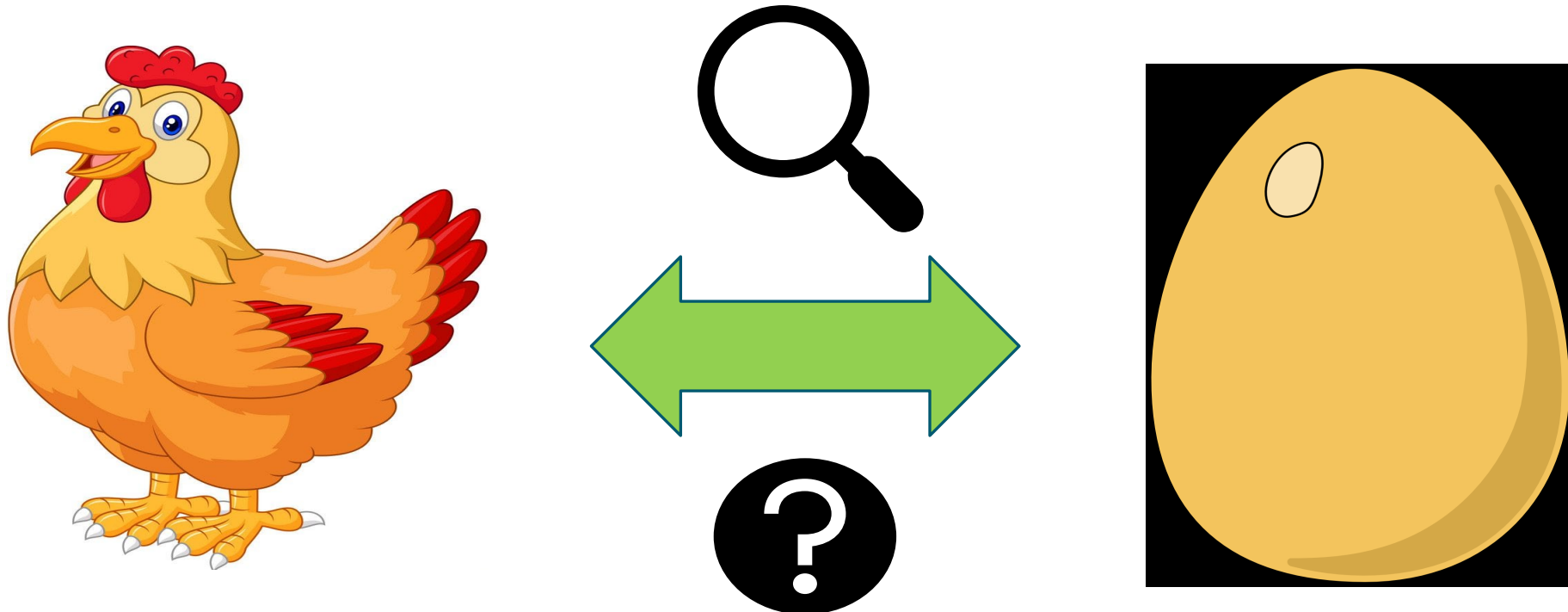
Supported Education

- Clubhouse Model
- Importance
- Collaboration with Post-Secondary Institutions



Comorbid

- Chicken or the egg?
- Higher priority



Dual Diagnosis

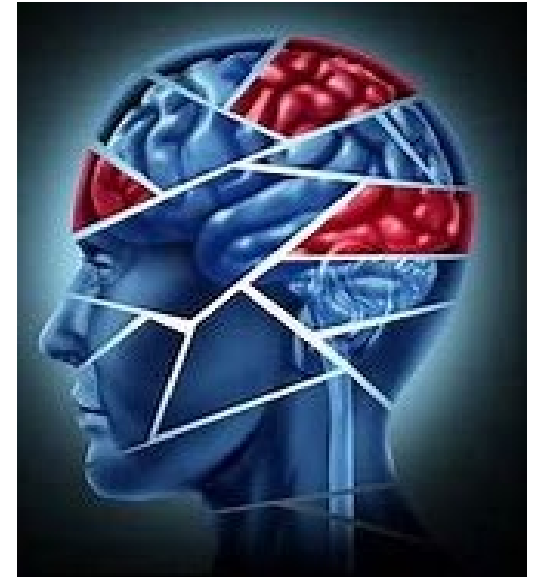
- Collaboration with Intellectual Disabilities agency
- Statewide Employment Leadership Network (SELN)
- Youth Leadership Network



- Veterans Administration (VA)
 - Funded services
- VA Peer Support Services



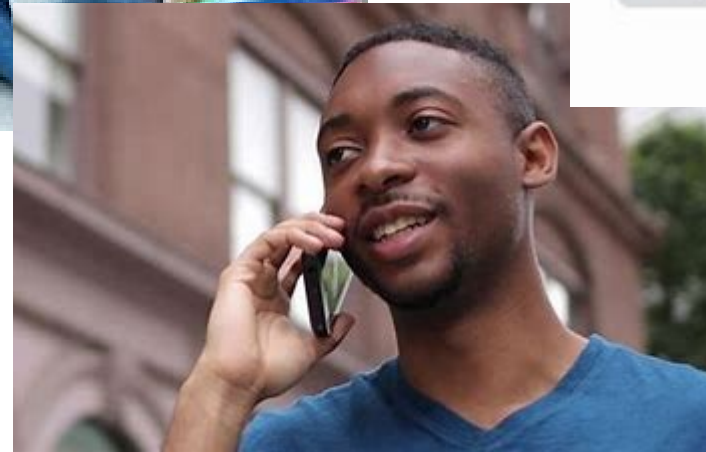
- Percentage of individuals with MH in jail/prison
- Percentage of individuals with substance use disorders (SUD) in jail/prison
- Traumatic Brain Injury (TBI)





Certified Peer/Recovery Specialist

- History
- Organic
- Lived life
- Multi-use





Funding and Long Term Supports

- Braided funding
- Social Determinants of Health
 - Value Based Purchasing
- Maryland model
- Oregon model
- North Carolina Model



- IPS Supported Employment Practice & Principles <https://ipsworks.org/wp-content/uploads/2017/08/ips-supported-employment-practice-and-principles1-1.pdf>
- IPS Supported Employment Fidelity Scale <https://ipsworks.org/wp-content/uploads/2017/08/IPS-Fidelity-Scale-Eng1.pdf>
- Supported Education Fidelity Tool <https://portal.ct.gov/-/media/DMHAS/Publications/SupportedEducationFidelityScalepdf.pdf>
- College Students with Psychiatric Disabilities <https://files.eric.ed.gov/fulltext/ED526389.pdf>
- Individual Support and Placement (IPS) a Practical Guide <https://ipsworks.org/wp-content/uploads/2017/07/Screen-Shot-2017-07-21-at-11.27.24-AM.png>

References

- https://www.caregiver.va.gov/support/Peer_Support_Mentoring_Program.asp
- https://www.veteranshealthlibrary.va.gov/142,41684_VA
- <https://www.apa.org/monitor/2014/10/incarceration>
- <https://www.hhinc.org/peace/>
- <https://www.ftnys.org/workforce/family-peer-advocate-credential/#:~:text=Family%20Peer%20Advocates%20have%20%E2%80%98lived-experience%E2%80%99%20as%20the%20parent,and%20strategies%20to%20empower%20and%20support%20other%20families.>
- <https://thinkcollege.net/>
- <http://pyln.org/>

Randy Loss

○ successfulreentry@gmail.com

○ 717-559-2324

Kimberly Gerlach

○ kgerlachconsulting@gmail.com

○ 717-350-9764